

THE  
**Vantage**  
AT KAPITOLYO





YOUR ROCKWELL ADDRESS IN KAPITOLYO



Artist's Illustration

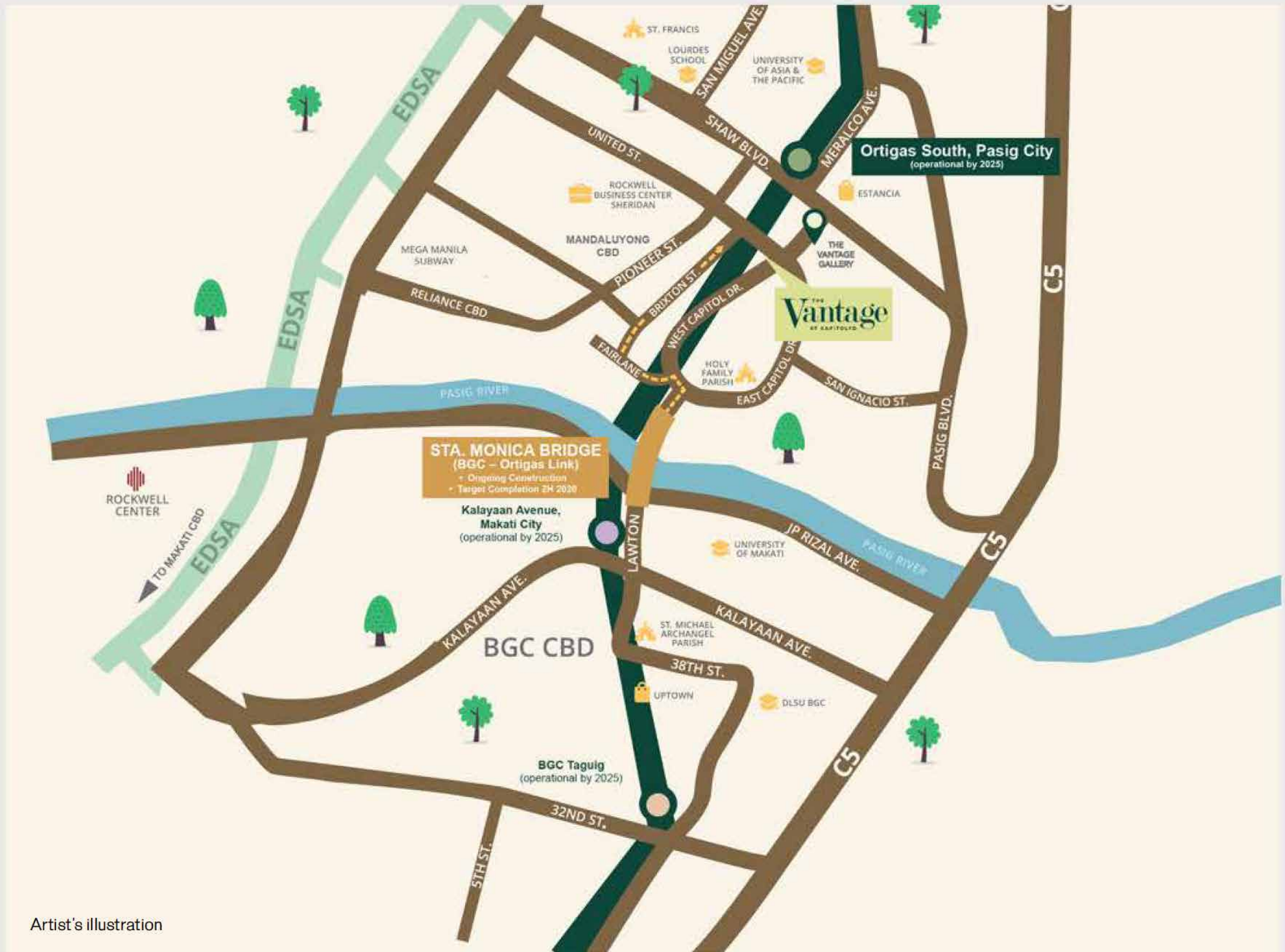


## DISCOVER WHERE IT ALL COMES TOGETHER

For over two decades, Rockwell has transformed skylines across the country and built communities beyond ordinary. Through Rockwell Primaries, it continues the heritage of providing quality living spaces primarily geared towards the upper-mid segment. As The Vantage rises in the heart of charming Kapitolyo, the Rockwell lifestyle can now be experienced by this endearing community.

The Vantage is an integrated vertical village and nestled among 4 major business districts. It features 2 high-rise residential towers and stands on almost a hectare patch of land.

Come home to your Rockwell address in Kapitolyo and be delighted by its lush discoveries and charming flavors.



Artist's illustration

# CLOSER TO ALL THAT MATTERS

---

Located in Kapitolyo, Pasig, along West Capitol Drive corner United Street, The Vantage is just a few steps away from lush food and lifestyle discoveries, giving you that 'home within a city' experience.

It is strategically situated among 4 major commercial business districts: Ortigas Center, Mandaluyong, Bonifacio Global City and Makati.

## 1KM

- Rockwell Business Center Sheridan
- Unilab
- San Miguel Corporation
- TV5 Media Center
- EDSA Shangri-La
- Shangri-La Plaza
- Estancia
- The 30<sup>th</sup>

## 3KM

- Rockwell Center
- The Podium
- SM Megamall
- Robinsons Galleria
- Crowne Plaza Galleria
- Maroo Polo Ortigas
- Meralco
- Rockwell Business Center - Ortigas
- The Medical City

## 5KM

- Bonifacio Global City
- Shangri-La The Fort
- St. Luke's Medical Center - Global City
- Glorietta
- Discovery Primea
- Greenbelt
- Makati Shangri-La
- Philippine Stock Exchange - Makati
- Eastwood

# RELISH IN BREATHTAKING VIEWS

This vertical village is overlooking breathtaking city skylines.

---

Actual photo





Artist's Illustration



## CITY LIVING NECESSITIES

Providing the convenience of city living, The Vantage's Two-level Retail Row allows you to enjoy day-to-day essentials and the leisure of great dining experiences.

Artist's Illustration

## A WARM WELCOME

Come home to comfort and security as The Vantage carries the Rockwell signature of safety and exclusivity.



Artist's illustration



## BASK IN IDEAL LEISURE

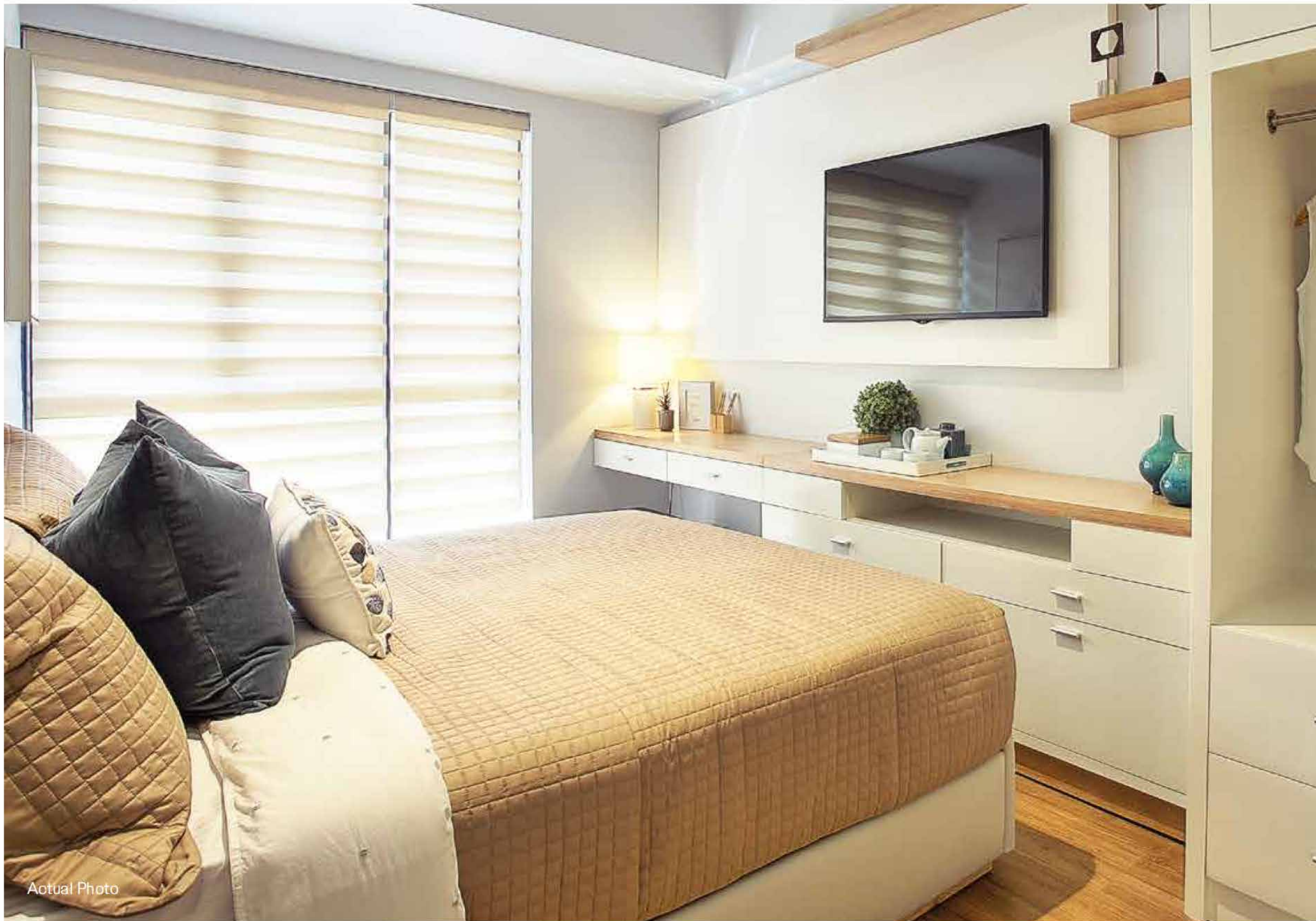
---

Delight in carefully selected amenities just right for city living.

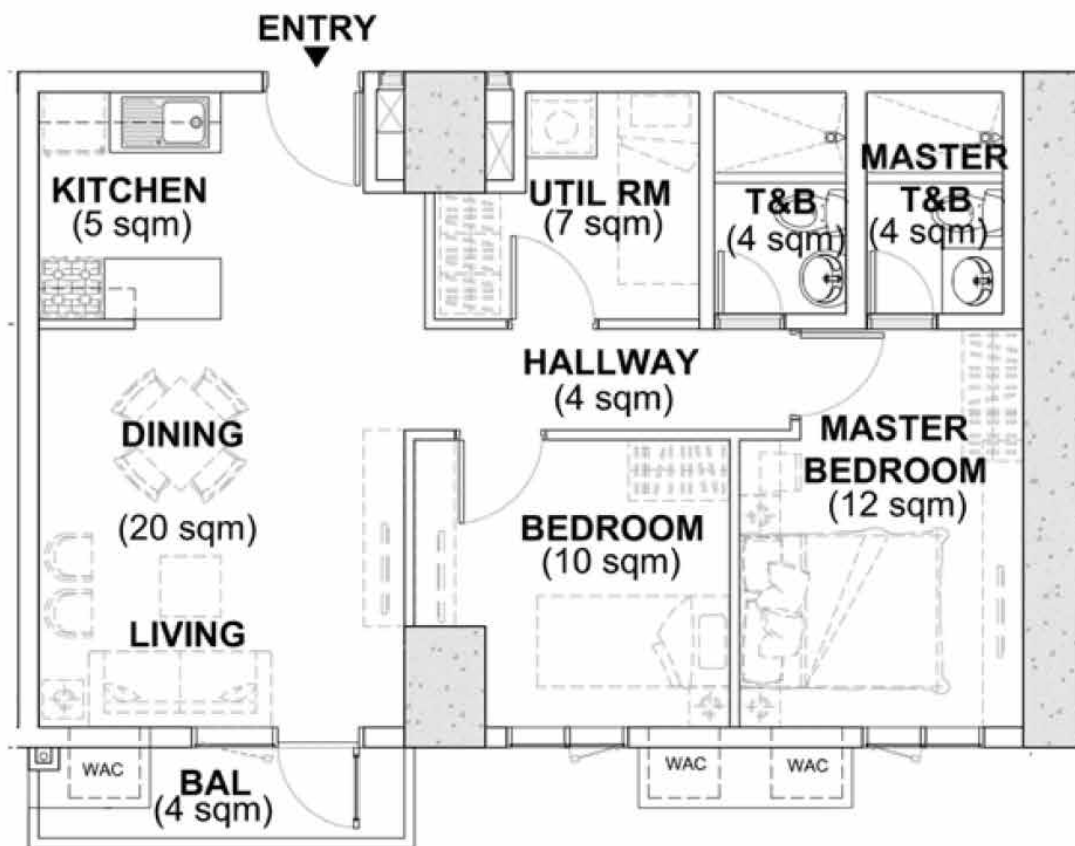
- Swimming Pool
- Kiddie Pool
- Function Room
- Fitness Studio
- Indoor and Outdoor Kids' Play Area



Artist's illustration



Actual Photo



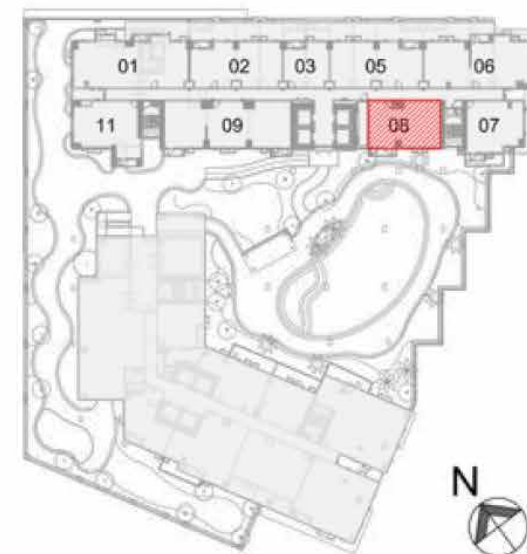
## 2-BEDROOM

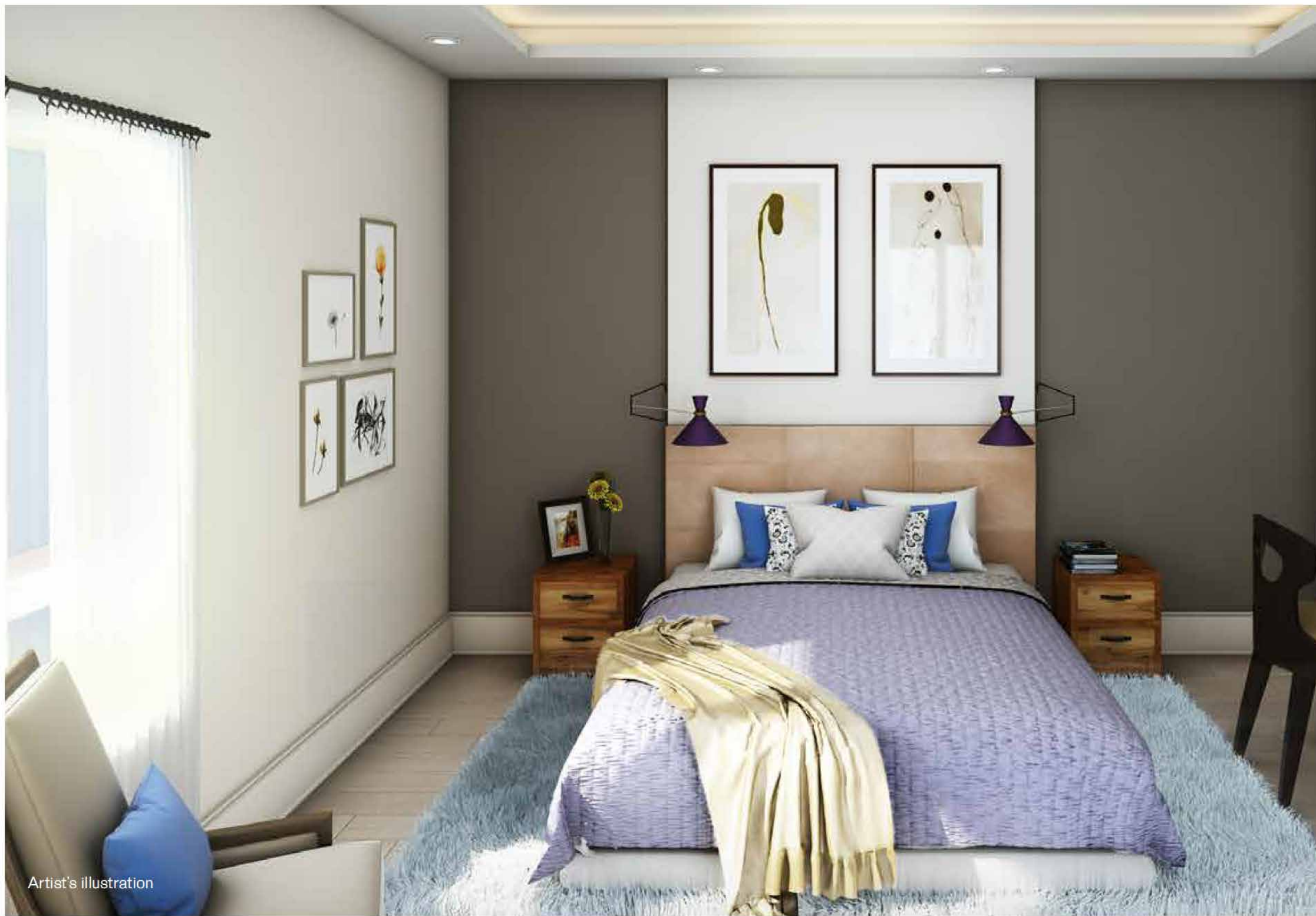
70 SQM

East Tower

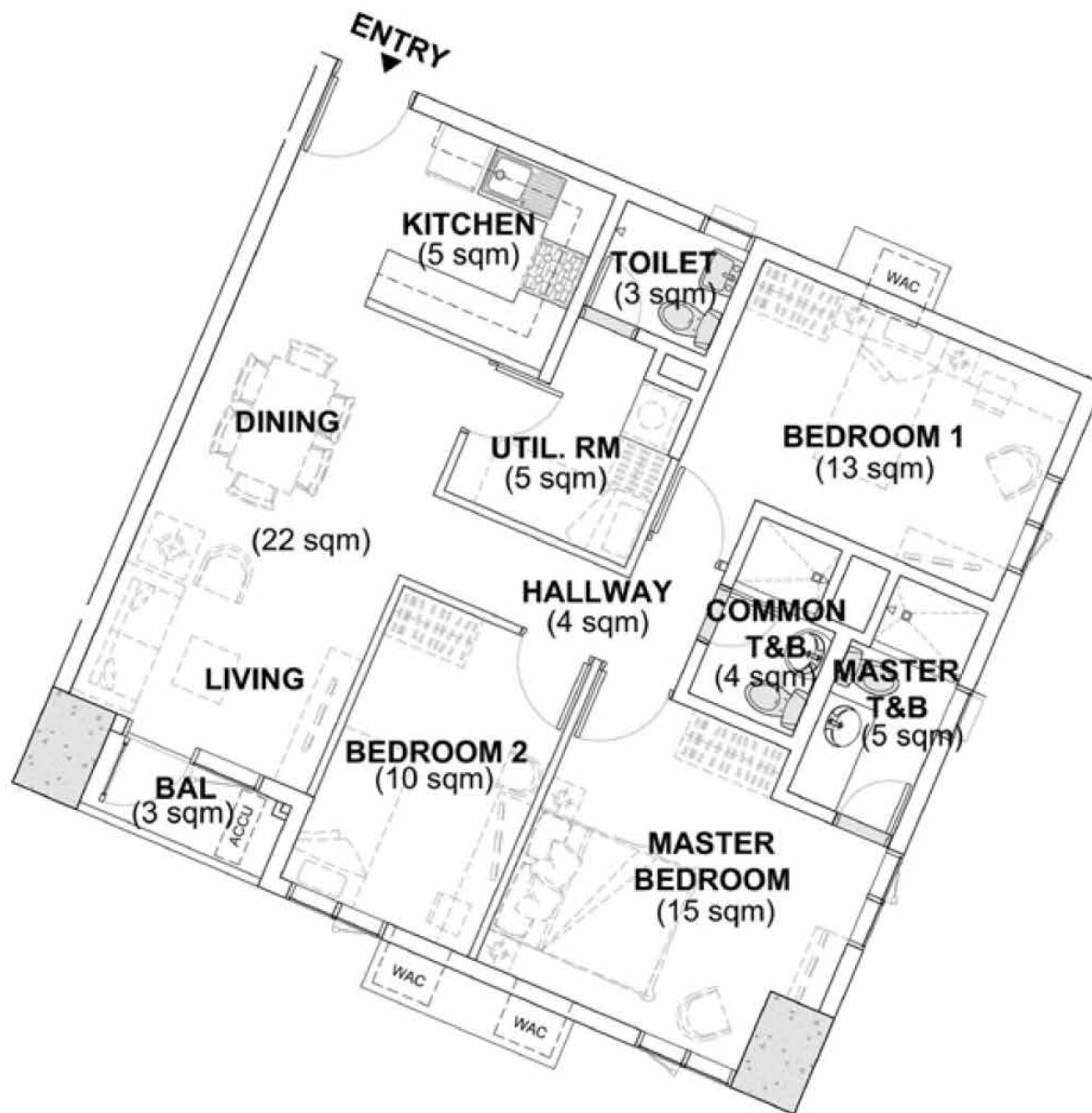
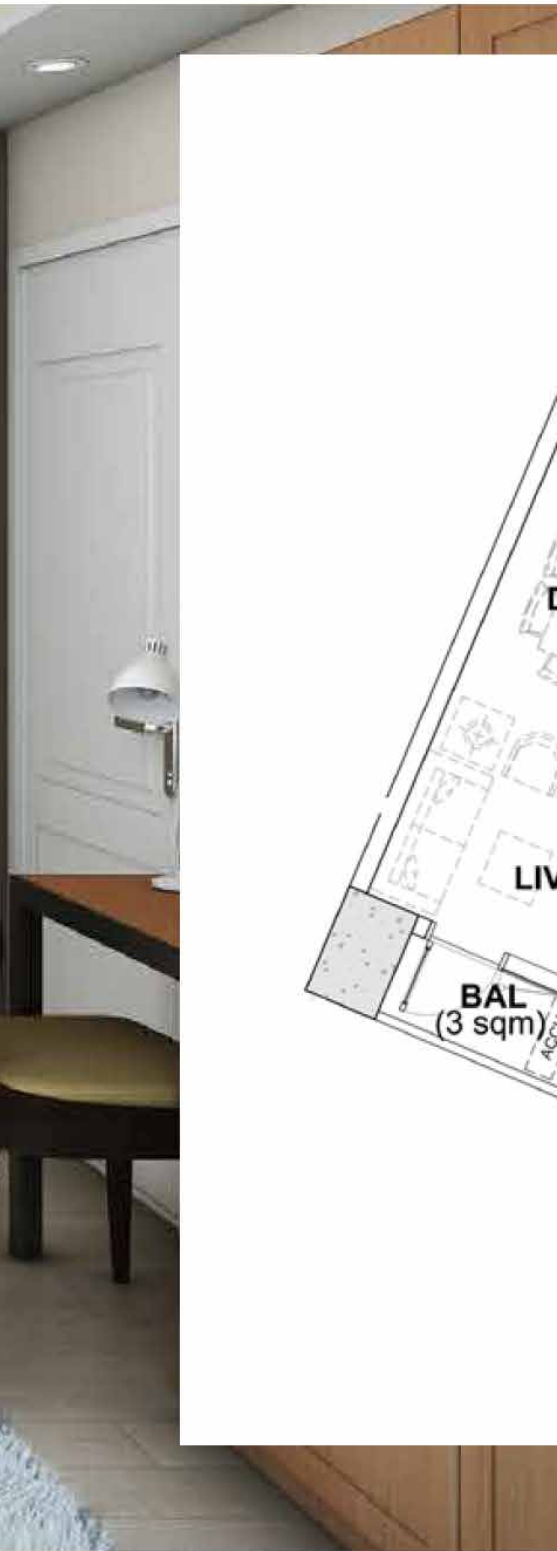
Typical Unit Layout

Perfect for starting and growing families,  
The Vantage's Two Bedroom Unit invites you to dwell  
in the warmth of your living spaces.





Artist's illustration



## 3-BEDROOM

89 SQM

West Tower

Typical Unit Layout

Indulge in even bigger living spaces with The Vantage's 89 sqm. 3-bedroom where families can create more meaningful memories in their sanctuary in the city.

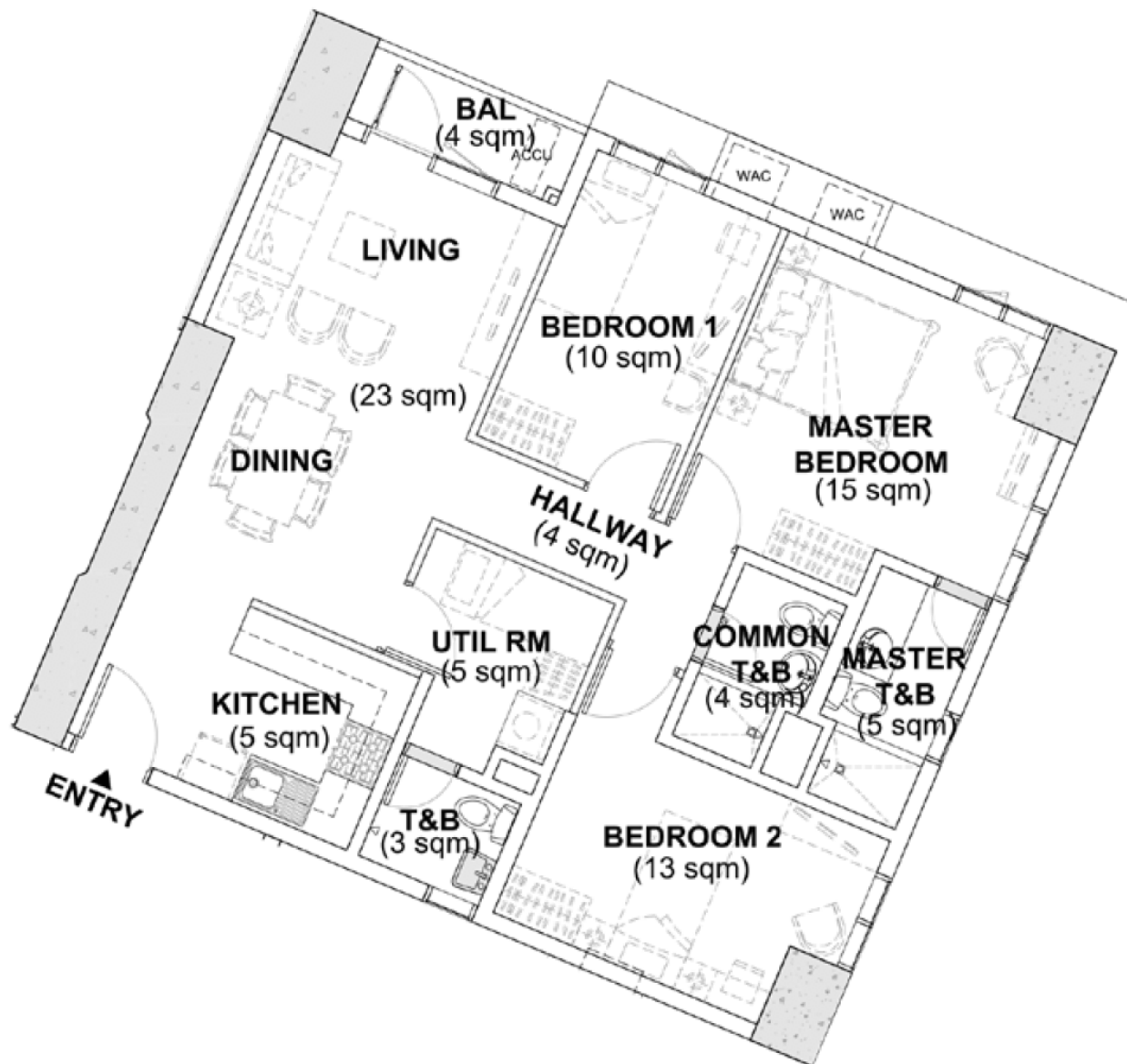


## 3-BEDROOM

91 SQM

West Tower

Typical Unit Layout



Bask in spacious living areas in The Vantage's 91 sqm. 3-bedroom unit and live life with your growing family at your own pace.

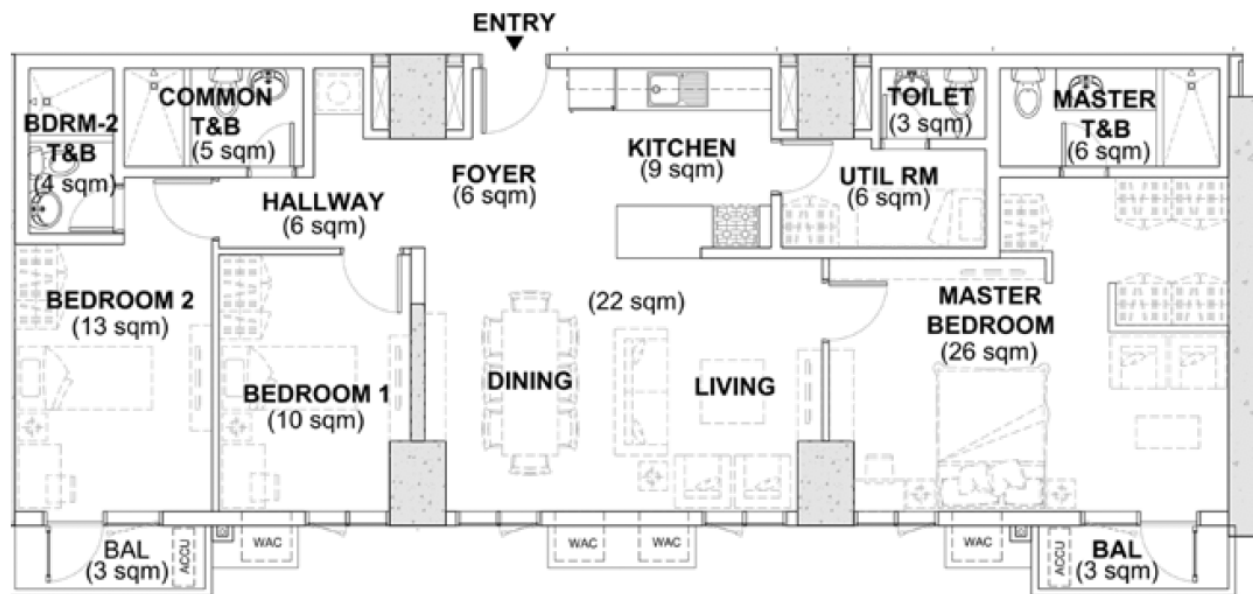


## 3-BEDROOM

122 SQM

East Tower

Typical Unit Layout



Bigger families can delight in the Three Bedroom Unit's even bigger space, allowing them to relish city living lifestyle with their own pace



# BUILDING FEATURES

---

Property Management Service by  
Rockwell Property Management Corporation

24/7 Security

Automatic fire alarm and protection systems

100% back-up emergency power

Closed-circuit TV Monitoring

Key card access





Actual Photo



Actual Photo

## STANDARD UNIT FINISHES

---

### **LIVING / DINING / KITCHEN**

Ceramic Floor Tiles (600x600)  
Painted Cement Plaster Walls  
Painted Cement Finish for Ceiling

### **MASTER BEDROOM**

Laminated Wood-like Flooring  
Painted Cement Plaster Walls  
Painted Cement Finish for Ceiling

### **MASTER TOILET AND BATH**

Ceramic Floor Tiles (300x600)  
Ceramic Wall Tiles (300x600), 1.8m high  
Painted Cement Plaster Walls  
Painted Gypsum Board Ceiling

### **BEDROOMS 1 & 2**

Laminated Wood-like Flooring  
Painted Cement Plaster Walls  
Painted Cement Finish for Ceiling

### **COMMON TOILET AND BATH**

Ceramic Floor Tiles (300x600)  
Ceramic Wall Tiles (300x600), 1.8m high  
Painted Cement Plaster Walls  
Painted Gypsum Board Ceiling

### **MAID'S QUARTERS / UTILITY ROOM**

Ceramic Floor Tiles (300x300)  
Painted Cement Plaster Walls  
Painted Cement Finish for Ceiling

### **MAID'S TOILET AND BATH**

Ceramic Floor Tiles (300x300)  
Ceramic Wall Tiles (300x300), 1.8m high  
Painted Cement Plaster Walls  
Painted Gypsum Board Ceiling

### **BALCONY**

Ceramic Floor Tiles (300x300)  
Galvanized Steel Railing Painted Cement Finish for  
Ceiling

# PROJECT CONSULTANTS

---

**ARCHITECTURE:**

Pimentel Rodriguez Simbulan & Partners

**INTERIOR DESIGN:**

Erfe & Associates

**STRUCTURAL DESIGN:**

Sy<sup>2</sup> + Associates

**MECHANICAL ENGINEERING DESIGN:**

L.R. Punsalan & Associates

**ELECTRICAL ENGINEERING DESIGN:**

A. Licerio Engineering Consultancy Services

**PLUMBING & SANITARY ENGINEERING:**

NBF Consulting Inc.

**FIRE PROTECTION DESIGN:**

NBF Consulting Inc.

**FENG SHUI:**

Dr. Andy Tan

# THE Vantage AT KAPITOLYO

[www.rockwellprimaries.com.ph](http://www.rockwellprimaries.com.ph)  
Call 0917-111-VNTG (8684)

© March 2019

A property developed by

ROCKWELL  
PRIMARIES

HLURB LS No. 031587

HLURB ENCR AA-2018/11-2280

Completion Dates: West Tower: 3Q 2020, East Tower: 3Q 2021  
50 West Capitol Drive, Pasig, Metro Manila